

The Fiat 500 (312), launched in 2007, is a modern take on the iconic 1957 original. Its retro-inspired design and compact size make it ideal for city driving, combining style, agility, and efficiency. Competing with the likes of the Mini Cooper and Smart ForTwo, it stands out for its nostalgic charm and everyday practicality. The car has been incredibly well received, securing its place as best-seller in eleven European countries to date and it's still going strong!



VXPRO EE3202
Oil Temperature Switch



VXPRO EE6003
(EGR) Exhaust Gas
Recirculation Valve



VXPRO EE2723
(EGP) Exhaust Gas
Pressure Sensor



VXPRO EX5005
(EGTS) Exhaust Gas
Temperature Sensor



VXPRO EH5098
Blower Motor



VXPRO EH1059
Blower Motor Resistor



VXPRO EE5056
Ignition Coil with Leads



Lucas LSP002
Spark Plug

NEW!
RANGE

VXPRO EE5034
Pencil Ignition Coil

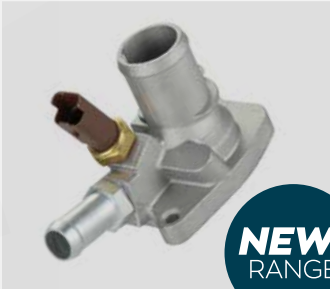
VXPRO ET4010
Ignition Leads

PREMIER
TecDoc®
DATA SUPPLIER

VXPRO EE4078
Mass Airflow
Sensor



VXPRO EH1061
Radiator Fan Resistor



VXPRO EH2002
Coolant Thermostat

NEW!
RANGE



VXPRO EA8513/ EA8514
Front / Rear
Brake Pad Fitting Kits

Many more compatible
references available.

This is only a small selection of the Fiat 500 compatible components on offer from ELTA Automotive. Full listings can be found on TecDoc, MAM AutoCat and our new eCat using the address below or QR opposite.



NEW
eCat



VXPRO ER1473 (Left)
VXPRO ER1474 (Right)
Window Lift Regulator
with Motor

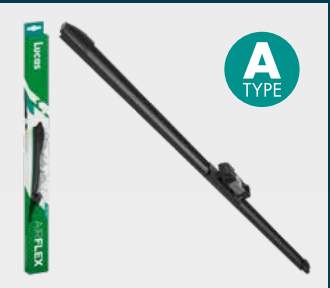


VISIONPRO EB0101SB
Lucas LLD1S
Xenon Headlight Lamp



Lucas LGS1410
Gas Spring Rear Hatch

NEW!
RANGE



Lucas LLD1S LLD1S LLD1S
AirFLEX Direct Fit Wipers



VISIONPRO EW9032
Lucas LRW1032
Wiper Motor (Front)



VISIONPRO EW9060
Lucas LRW1060
Wiper Linkage + Motor



VISIONPRO EW5505
Lucas LRW5505
Washer Pump

ELTA | PROFILE

FIAT 500 (312) 2007 >

